



HYC Mid-Winter Regatta February 23, 2019

Organizing Authority: The Houston Yacht Club, Shoreacres, Texas

SAILING INSTRUCTIONS

1. RULES

- 1.1 The regatta will be governed by the rules as defined in *The Racing Rules of Sailing*, Class Rules and the Galveston Bay PHRF Guidelines.

2. NOTICES TO COMPETITORS

- 2.1 Notices to Competitors will be posted on the official "HYC Race Information" notice board located in the breezeway adjacent to the offices of The Houston Yacht Club.

3. CHANGES TO SAILING INSTRUCTIONS

- 3.1 Any change to these Sailing Instructions will be posted before 0800 on the day it will take effect, except that any change to the schedule of races will be posted by 2000 on the day before it will take effect.
- 3.2 The Race Committee may, at its discretion, change the Sailing Instructions on the water, as follows:
- 3.2.1 Changes will be communicated after Code Flag "L" is raised before the warning signal for the first race to which the change in Sailing Instructions apply.
 - 3.2.2 The change will be communicated via VHF and orally at the stern of the Race Committee (RC) signal boat.

4. SIGNALS MADE ASHORE

- 4.1 Signals made ashore shall be displayed from the signal staff on the lawn of The Houston Yacht Club.
- 4.2 When flag AP is displayed ashore, "1 minute" is replaced with "not less than 60 minutes" in the race signal AP.
- 4.3 Signal flags may be flown either alone or over one or more numeral pennants. Individual lines will be designated by following pennants:
- 4.3.1 When flag AP over "1" pennant is displayed, the signal applies to the Windward/Leeward Line .
 - 4.3.2 When flag AP over "2" pennant is displayed, the signal applies to the Pursuit Line.
 - 4.3.3 When flag AP over "3" pennant is displayed, the signal applies to the Dinghy Line. A colored flag beneath "3" identifies the class affected.
 - 4.3.4 If no Numeral Pennant is displayed, the signal pertains to all lines. This changes RRS Race Signals.

5. SCHEDULE OF RACES

- 5.1 Races will be sailed according to the schedule in the Notice of Race. All times are GPS times.

6. CLASS FLAGS

6.1	Ensign	Ensign Class Flag
	J/105	Yellow Flag
	J/24 and J/22	Green Flag
	Optimist Green	Green Flag
	Optimist RWB	Red Flag
	420	White Flag
	Laser	Gray Flag
	PHRF W/L	Brown Flag
	Lightning	Lightning Class Flag

7. RACING AREA

- 7.1 All classes will sail around drop or fixed marks in the area bounded by Morgan's Point on the north, the San Leon shoreline on the south, the Houston Ship Channel on the east and the La Porte/Shoreacres shore line on the west. The racing area is shown in Attachment A.
- 7.2 Boats shall not enter any Ship Channel. Ship Channels are designated as obstructions.

8. CHECK IN

- 8.1 Prior to the warning for the first race of each day, each boat shall check-in with, and be recognized by, the Race Committee (R/C) Signal Boat displaying the code Flag "L," by passing close astern, on starboard tack and hailing her sail number. Boats failing to check in properly may not be scored.
- 8.2 Pursuit Course racers must additionally hail their PHRF rating and spinnaker, or non-spinnaker class to complete their entry. Pursuit Course check-in must be completed 5 minutes prior to the display of the Warning/Preparatory Signal. Boats not checked-in will be scored DNC without a hearing. This modifies RRS Appendix A5.

9. THE COURSES

- 9.1 The Windward/Leeward Line - South of the Bayport Ship Channel
No later than the warning signal, the Race Committee Signal boat will display a numeral pennant indicating the number of legs to be sailed. All marks shall be rounded leaving the mark to port. If there is no gate, the downwind rounding will be the starting line pin. See Attachment C.
- 9.2 The Pursuit Line - North of Bayport Ship Channel
9.2.1 Attachment B shows the courses and the order in which the marks are rounded.
9.2.2 No later than the warning/preparatory signal, the Race Committee Signal Boat will display a numeral pennant indicating the course to be sailed (See Attachment B).
- 9.3 The Dinghy Line - North of Bayport Ship Channel
The course will be either: Trapezoid or a triangular mid-leg start/finish or L2 as shown in *The Racing Rules of Sailing*, Appendix S. If there is no gate, the downwind rounding will be the starting line pin. L2 will be signaled with the numeral 2 pennant; Triangular course will be signaled with the numeral 3 pennant, trapezoid course will be signaled with a numeral 4 pennant.

10. MARKS

10.1 The Windward/Leeward Line

- 10.1.1 The windward mark will be a yellow tetrahedron and an offset.
- 10.1.2 New marks as provided in instruction 13 will be orange tetrahedrons.
- 10.1.3 For the first leg of all courses and the last leg of a leeward finish, the leeward mark is not considered a mark of the course.
- 10.1.4 For the last leg of a windward finish, the windward mark is not considered a mark of the course.

10.2 The Pursuit Line

The Pursuit Line mark layout is shown in Attachment A.

- Mark #1, is the "The Judges Stand" located approximately: **29° 37.367'N, 94° 59.726'W**
- Mark #2, is the "High Range" located at approximately: **29° 37.790'N, 94° 58.214'W**
- Mark #3, a large YELLOW tetrahedron located approximately: **29° 39.833'N, 94° 58.919'W**
- Mark #4, a large YELLOW tetrahedron located at approximately: **29° 38.839'N, 95° 00.114'W**

10.3 The Dinghy Line

- 10.3.1 All marks will be ORANGE balls; the Green Fleet marks will be YELLOW.
- 10.3.2 The starting line pin is a floating shape.

11. THE START

11.1 The Windward/Leeward Line and Dinghy Line

- 11.1.1 Races will be started by using RRS 26.
- 11.1.2 The starting line will be between a staff displaying an orange flag from the signal boat on the starboard end and a mark or floating shape at the port end.

11.2 The Pursuit Line

- 11.2.1 The **Pursuit Line** will be between a staff displaying an orange flag on a race committee vessel and the course side of the starting mark.
- 11.2.2 The **Pursuit Line start** is staggered, based on the boat PHRF handicap. The Warning/Preparatory signal, as well as the starting times for all competitors will be provided at the competitor's briefing. The Warning/Prep Signal is anticipated to be on the hour or on even 10 min increments. (EG 1100, 1110, 1120, 1130 ...). Warning/Prep Signals for the First Race each day is anticipated to be at 1100. Warning/Prep Signal time after Postponement or for additional races will be announced on **VHF Channel 72**.
- 11.2.3 The Warning/Preparatory signal is the display of the orange line flag.

11.3 Any boat whose preparatory signal has not been made shall keep clear of the starting area and of any boat whose preparatory signal has been made.

11.4 A boat shall start no later than 10 minutes after her assigned starting time.

11.5 The Race Committee may elect to trail a line (not to exceed 30') attached to a floating object, behind the Race Committee boat or elect to attach a buoy to the boat's anchor marking the anchor and the anchor rode (of up to approximately 50'). The floating object and its line shall be considered to be part of the Race Committee boat and hitting the floating object or running over the line shall be treated as hitting the Race Committee boat.

12. RECALLS

12.1 Recalls will be signaled in accordance with RRS 29.

- 12.2 As a courtesy, the Race Committee will attempt to hail boats "On Course Side" (OCS) as soon as possible after the start. The Race Committee may use VHF radios or loud hailer.
- 12.3 The failure of electronic equipment, failure to hear a hail, order of hail, or delay in hailing will not be grounds for redress. This modifies RRS 62.1(a).

12.4 The Pursuit Line

- 12.4.1 Code flag X will be displayed for a short period of time, and such length of time shall be at the discretion of the Race Committee, for the Pursuit Line. This changes RRS 29. The length of time that Code flag X is displayed will not be grounds for redress. This changes RRS 62.1(a).
- 12.4.2 Pursuit Line start times are GPS time, which governs. All boats will be responsible for determining their exact start time, and no start times will be announced or signaled from the Race Committee boat. The Race Committee will monitor start times of each boat. OCS boats have the option of returning to the start line and restarting, or shall take the penalty as shown in the table below. The penalty will be assessed at scoring. This changes RRS 29.1 and Appendix A.

0 to 10 sec early	penalty of 30 seconds
10 to 30 sec early	penalty of 1 minute
30 to 1 min early	penalty of 3 minutes
1 min to 2 min	penalty of 10 minutes
More than 2 min	disqualified

13. CHANGE OF THE POSITION OF THE NEXT MARK

13.1 The Dinghy Line

The Race Committee boat may relocate the windward mark to square the course. No change will be signaled. This changes RRS 33.

13.2 The Windward/Leeward Line

To change the next leg of the course, the Race Committee will lay a new mark (described in Section 10.1) and remove the original mark as soon as practicable.

14. SHORTENED COURSE

14.1 The Windward/Leeward Line and Dinghy Line

The Race Committee may shorten the course at the leeward mark, with a finish downwind in the direction from the windward mark with Race Committee Signal Boat to port. If the course is shortened, the Race Committee Signal Boat will be in the original starting position and will not relocate to the opposite side of the finish mark.

14.2 The Pursuit Line

The Race Committee may shorten the course at one of the marks described in Section 10.2 of these Sailing Instructions. Any shortening of the course will be signaled (flag S displayed with 2 sounds).

15. THE FINISH

15.1 The Windward/Leeward and Dinghy Lines

The Finish Line will be between a staff displaying an orange flag on the Race Committee boat on the port end and a floating shape on the starboard end.

15.2 The Pursuit Line

The Finish Line will be between a staff displaying an orange flag on a Race Committee boat and the course side of the finish mark. The Race Committee will record the order of finish.

16. TIME LIMITS

- 16.1 Unless posted on the HYC Race Information Board, the Windward/Leeward and Dinghy Line time limit is **120 minutes** and the Pursuit Line time limit is **210 minutes**.
- 16.2 Boats failing to finish within 30 minutes (the finishing window) after the first boat in its class sails the course and finishes will be scored Time Limit Expired (TLE). The points awarded for boats scored TLE will be the whole number (rounding 0.5 upward) equal to the number of boats starting the race minus 50% of the number of boats scored TLE. This changes RRS 35, A4, A5 and A11.

17. PENALTIES

- 17.1 The first two sentences of RRS 44.1 are changed to: "A boat may take a One-Turn Penalty when she may have broken a rule of Part 2 or rule 31 while racing. However, when she may have broken a rule of Part 2 while in the zone around a mark other than a starting mark, her penalty shall be a Two-Turns Penalty."

18. PROTESTS AND REQUESTS FOR REDRESS

- 18.1. Intent to protest shall be signaled in accordance with RRS 61.1. The protesting boat shall also notify the Race Committee at the first reasonable opportunity and be acknowledged before leaving the finish area.
- 18.2 Optis only: The first three (3) sentences of RRS 61.1(a) are changed as follows: "A boat intending to protest shall inform the other boat at the first reasonable opportunity. When her protest will concern an incident in the racing area that she was involved in or saw, she shall hail "Protest" and conspicuously display a protest flag attached to a lanyard or shock cord which is attached to the competitors PFD and point it at the boat intended to be protested until that boat acknowledges the hail". RRS 61.1(a)(2) is deleted. This changes RRS 61.1.
- 18.3 Protests shall be written on forms available at the office of the Houston Yacht Club and delivered there within sixty (60) minutes following the arrival in the harbor of the Race Committee boat for the racing line involved. This time will be posted on the "HYC Race Information" official notice board. This changes RRS Appendix S13.2.
- 18.4. The times and locations of the protest hearings, along with the names of the boats involved will be posted on the "HYC Race Information" official notice board at the entrance to the breezeway adjacent to the offices of The Houston Yacht Club no later than thirty (30) minutes after the protest time period.
- 18.5 For the purpose of meeting obligations under US Sailing prescriptions concerning redress, notification of a redress hearing shall be by posting on the official notice board for thirty (30) minutes. The requirement for written requests for attendance of the hearing will be satisfied by a signup sheet at the official protest table. No more than one person per boat may attend. **No request for reopening a hearing will be accepted after 6 p.m. Saturday, February 23, 2019.** This changes RRS Appendix S13.5 and RRS 62.2.

19. SCORING

- 19.1 The Low-Point Scoring system of Appendix A shall apply.
- 19.2 One race shall be completed to constitute a series.

19.3 No scores will be excluded. This changes RRS A2.

20. SAFETY

20.1 Any boat that has checked in, and then withdraws before finishing the race, shall notify the Race Committee on the water, or, if that is not possible, The Houston Yacht Club office by telephone: **281-471-1255**, or **VHF Channel 68 (if Windward Leeward Line)**, or **VHF Channel 69 (if Dinghy Line)**, or **VHF Channel 72 (if Pursuit Line)**. Failure to comply with this requirement may result in disqualification from this regatta.

20.2 Boats shall not discharge trash into the water. The penalty for violating RRS 55 will be a 20% Scoring Penalty. This changes RRS 55.

20.3 **DISCLAIMER OF LIABILITY:** Competitors participate in this regatta entirely at their own risk. See RRS 4, Decision to Race. The Organizing Authority will not accept liability for material damage, personal injury or death sustained in connection with, prior to, during, or after this regatta.

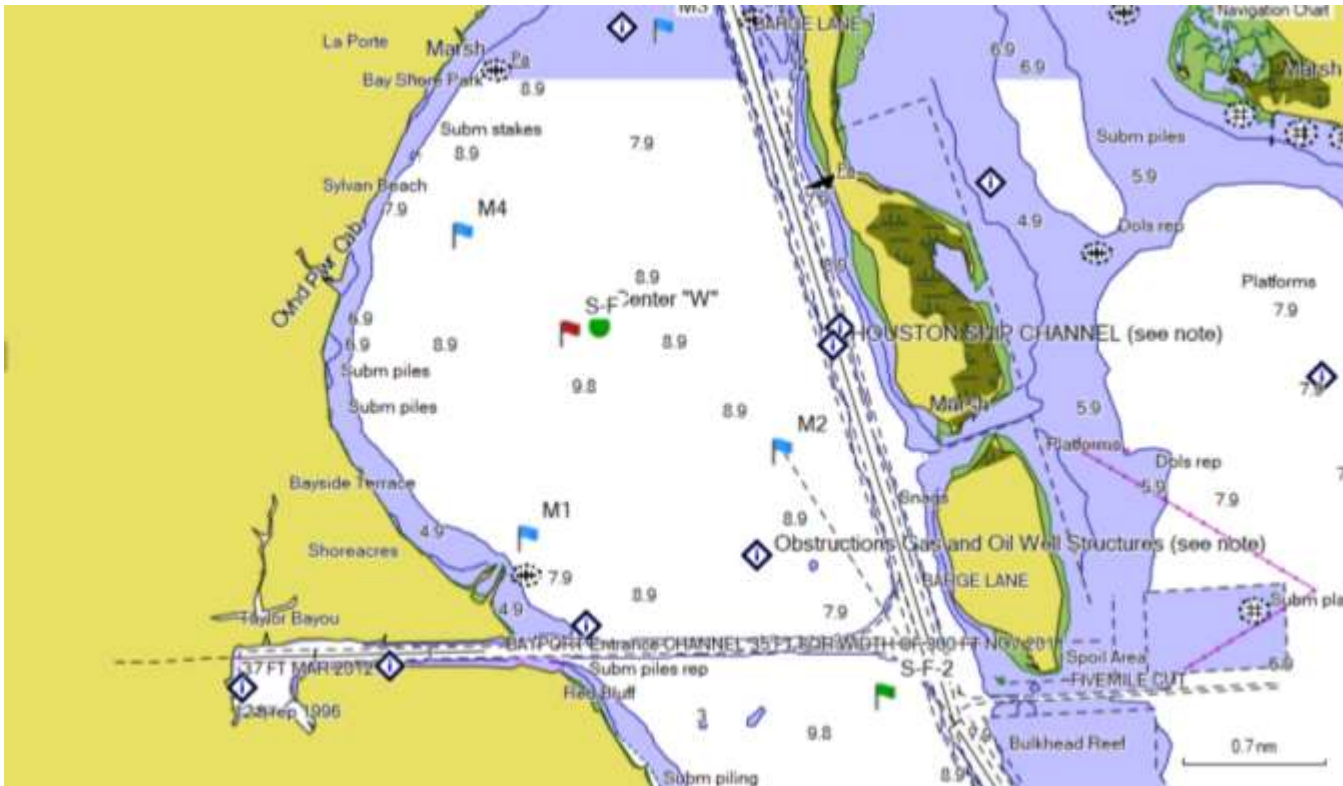
21. RADIO COMMUNICATIONS

21.1 Except in an emergency that threatens the safety or life and/or property, a boat that is racing shall not make voice or data transmissions and shall not receive voice or data communication that is not available to all boats.

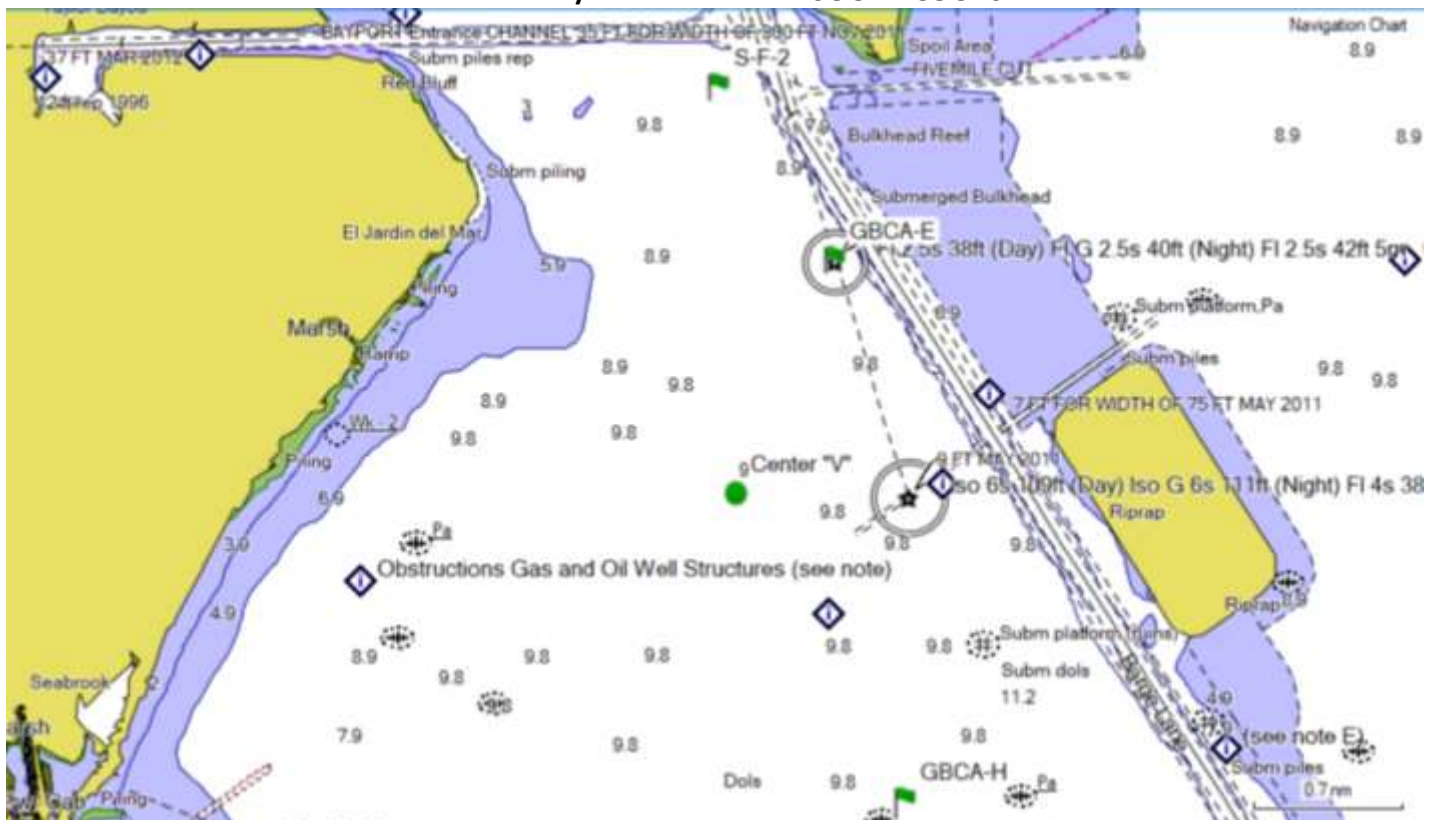
21.2 The Race Committee will attempt to monitor **VHF Channel 68 for the Windward/Leeward Line, VHF Channel 69 for the Dinghy Line, and VHF Channel 72 for Pursuit line**; and may use VHF radio to hail premature starters and the abandonment of races.

ATTACHMENT A: RACING AREAS

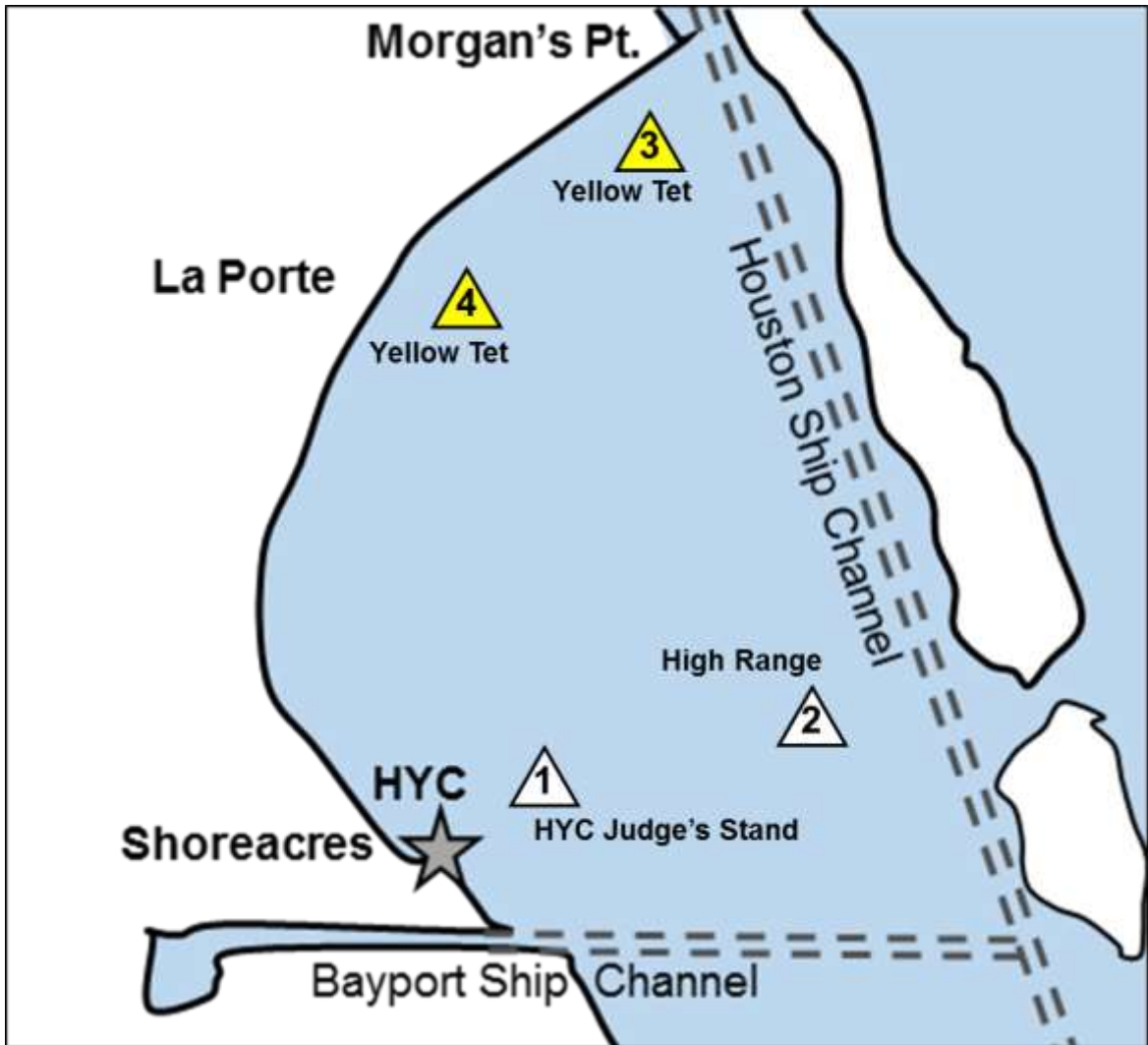
DINGHY AND PURSUIT LINES - NORTH COURSE



WINDWARD/LEEWARD LINE - SOUTH COURSE



ATTACHMENT B
PURSUIT COURSE MARK LAYOUT



ATTACHMENT B

PURSUIT LINE COURSES

Course #1

Mark 1 to Mark 4 Leave on Port
Mark 4 to Mark 1 Leave on Port
Mark 1 to Mark 2 Leave on Port
Mark 2 to Mark 1 Leave on Starboard
Mark 1 to Mark 4 Leave on Port
Mark 4 to Mark 1 to finish for a total of 8.8 miles

Course #2

Mark 1 to Mark 2 Leave on Port
Mark 2 to Mark 1 Leave on Starboard
Mark 1 to Mark 4 Leave on Starboard
Mark 4 to Mark 3 Leave on Port
Mark 3 to Mark 4 Leave on Port
Mark 4 to Mark 1 to finish for a total of 8.6 miles

Course #3

Mark 1 to Mark 2 Leave on Port
Mark 2 to Mark 3 Leave on Port
Mark 3 to Mark 1 Leave on Starboard
Mark 1 to Mark 4 Leave on Port
Mark 4 to Mark 1 Leave on Port
Mark 1 to Mark 2 Leave on Port
Mark 2 to Mark 1 to finish for a total of 11.8 miles

Course #4

Mark 1 to Mark 2 Leave on Port
Mark 2 to Mark 3 Leave on Port
Mark 3 to Mark 2 Leave on Port
Mark 2 to Mark 3 Leave on Port
Mark 3 to Mark 4 Leave on Port
Mark 4 to Mark 1 Leave on Port
Mark 1 to Mark 4 Leave on Port
Mark 4 to Mark 1 to finish for a total of 13.6 miles

Course #5

Mark 1 to Mark 2 Leave on Port
Mark 2 to Mark 3 Leave on Port
Mark 3 to Mark 4 Leave on Port
Mark 4 to Mark 1 to finish for a total of 6.4 miles

Course #6

Mark 1 to Mark 3 Leave on Port
Mark 3 to Mark 4 Leave on Port
Mark 4 to Mark 2 Leave on Port
Mark 2 to Mark 3 Leave on Port
Mark 3 to Mark 1 to finish for a total of 10.5 miles

ATTACHMENT C - WINDWARD/LEEWARD LINE

