

**SAILING INSTRUCTIONS****To be sailed SATURDAY 13 MAY 2017****1. RULES**

- 1.1. The regatta will be governed by the rules as defined in The Racing Rules of Sailing.
- 1.2. WORLD SAILING Offshore Special Regulations (OSR) 2016-2017 (the 2017 update) Governing Offshore Racing for Monohulls & Multihulls will apply.
- 1.3. The non-spinnaker classes are designated category 3. The spinnaker class is designated Category 2.
- 1.4. US SAILING Prescription to the RRS Appendix V Rule V2 is modified to read: "After a race, a boat that may have broken one or more rules of Part 2 or rule 31 in an incident while racing may take a Post-Race Penalty for that incident. A boat takes the penalty by delivering a written notice to the race office that identifies the race number and when and where the incident occurred. The penalty shall be a 20% Scoring Penalty, calculated as stated in rule 44.3(c) if taken before the protest time limit expires. Otherwise a 30% Scoring Penalty shall apply, calculated as stated in rule 44.3(c). However, rules 44.1(a) and (b) apply, and the penalty shall not be taken after a protest hearing involving the incident has begun.
- 1.5. Appendix T will apply.
- 1.6. Appendix T1.b is modified to read: "A Post-Race Penalty is a 20% Scoring Penalty calculated as stated in rule 44.3(c) if taken before the protest time limit expires. Otherwise, a Post-Race Penalty is a 30% Scoring Penalty calculated as stated in rule 44.3(c). However, rule 44.1(a) applies."
- 1.7. All skippers are reminded to review RRS 4: Decision to Race and the Rules of Part 2: When Boats Meet.

**2. NOTICES TO COMPETITORS**

- 2.1. Notices to competitors will be e-mailed to all competitors e-mail address as entered at registration on RegattaNetwork.
- 2.2. Notices to competitors will be announced at the official regatta party Friday 12 May located at Captain Ken's Port 'O Call, Freeport TX.

**3. CHANGES TO SAILING INSTRUCTIONS**

- 3.1. Any written change to the sailing instructions will be announced at the official regatta party Friday 12 May located at Captain Ken's Port 'O Call, Freeport TX.
- 3.2. Verbal changes may be made on the water and shall be communicated to each boat by VHF before her warning signal.

**4. SIGNALS MADE ASHORE**

- 4.1. Signals made ashore will be displayed from a staff secured to the front of the Freeport Municipal Marina office in Freeport TX
- 4.2. When flag AP is displayed ashore, '1 minute' is replaced with 'not less than 60 minutes' in the race signal AP.

**5. SCHEDULE OF RACES**

- 5.1. No warning signal before 8:00 a.m. The starting sequence will be as described in section 6 below.
- 5.2. Each class will sail a single race

**6. CLASS FLAGS and STARTING SEQUENCE**

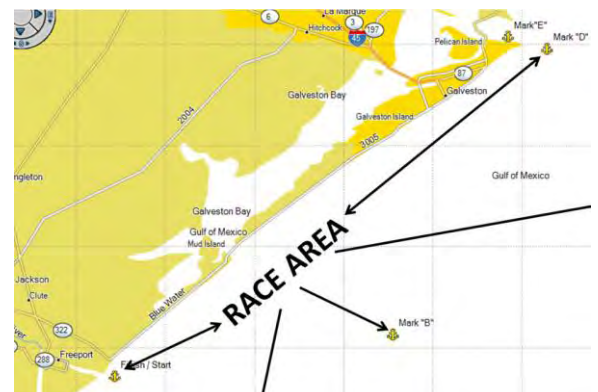
- |                   |                      |              |
|-------------------|----------------------|--------------|
| 6.1. FIRST START  | PHRF SPINNAKER:      | <b>Blue</b>  |
| 6.2. SECOND START | PHRF NON-SPINNAKER:  | <b>Brown</b> |
| 6.3. THIRD START  | GBCA CRUISING CLASS: | <b>Pink</b>  |

**7. RACING AREA**

- 7.1. Addendum A shows the location of the racing areas.

**8. THE COURSES**

- 8.1. The diagrams in the Course Option Illustrations show the courses, including the order in which marks are to be passed. All marks are to be left to port.
- 8.2. **GBCA CRUISING CLASS**
  - 8.2.1. The course will be 42.1 NM between the Freeport jetties

**ADDENDUM A**

starting area, the Galveston 5A Marker (Mark "F"), and the Bolivar Roads Marker 11 (Mark "G").

**8.3. PHRF NON-SPINNAKER AND SPINNAKER CLASSES**

8.3.1. For the PHRF classes there are three course options. These options are numbered 1 – 3 and will be signaled by a numeric flag no later than the warning signal for the class.

Course Option 1					
From	To	Description	Leave mark to:	Distance	Bearing
Starting area	A	Freeport Outer Buoy "Fp",Mo	Port	4.0	145°
A	B	TABS Buoy B	Port	18.6	70°
B	F	GA 5a	Port	23.5	28°
F	G	GA 11 finish line		3.0	
<b>Total distance:</b>				<b>49.1</b>	

Course Option 2					
From	To	Description	Leave mark to:	Distance	Bearing
Starting area	A	Freeport Outer Buoy "Fp",Mo	Port	4.0	145°
A	B	TABS Buoy B	Port	18.6	70°
B	D	High Island 179A AWOS (Apache Corp)	Port	23.2	60°
D	F	GA 5a	Port	12.3	315°
F	G	GA 11 finish line		3.0	
<b>Total distance:</b>				<b>61.1</b>	

Course Option 3					
From	To	Description	Leave mark to:	Distance	Bearing
Starting area	B	TABS Buoy B	Port	20.5	80°
B	F	GA 5a	Port	23.3	30°
F	G	GA 11 finish line		3.0	
<b>Total distance:</b>				<b>46.8</b>	

**9. MARKS**

9.1. The starting pin will be an orange floating object.

9.2. The finish pin will be mark G (GA 11) described below.

The Marks...	Lat/Lon hddd°mm.mmm'	Lat/Lon hddd°mm'ss.s"
A Freeport Outer Buoy "Fp",Mo	N28 52.628 W95 14.140	N28 52 37.7 W95 14 08.4
B TABS Buoy B	N28 58.938 W94 53.943	N28 58 56.0 W94 53 56.0
C Buckaneer GA 288 C	N28 53.648 W94 42.263	N28 53 38.9 W94 42 15.8
D Station KXIH - High Island 179A AWOS (Apache Corp)	N29 10.800 W94 31.267	N29 10 48.0 W94 31 16.0
E Heald Bank Rig MEHI-H1199-A	N29 08.018 W94 11.758	N29 08 01.1 W94 11 45.5
F GA 5a,Iso G 6s 30ft 6m Ra Ref	N29 19.639 W94 41.264	N29 19 38.3 W94 41 15.8
G GA 11 FI G 2.5S	N29 20.556 W94 44.462	N29 20 33.4 W94 44 27.7

**10. THE START**

10.1. Races will be started per RRS rule 26.

- 10.2. The starting line will be between a staff flying an orange flag on the signal boat and the course side of the starting pin.
- 10.3. Boats whose warning signal has not been made shall avoid the starting area during the starting sequence for other races.
- 10.4. A boat starting later than 5 minutes after her starting signal will be scored Did Not Start without a hearing. This changes rule A4.
- 10.5. Official time is GPS time



**The starting area**

## 11. THE FINISH

- 11.1. The finish line will be between an orange banner on the official signal vehicle on the beach (approximate bearing = 215 °) and the course side of the finish pin.
- 11.2. Please attempt to hail the race committee via VHF to alert them to your presence at the mark.
- 11.3. If the race committee is absent when a boat finishes, she should report her finishing time, and her position in relation to the rest of the fleet (as best as she can determine), to the race committee at the first reasonable opportunity.

## 12. PENALTY SYSTEM

- 12.1. US SAILING Prescription to the RRS Appendix V Rules V1 and V2 will apply.
- 12.2. US SAILING Prescription to the RRS Appendix V Rule V2 is modified to read: "After a race, a boat that may have broken one or more rules of Part 2 or rule 31 in an incident while racing may take a Post-Race Penalty for that incident. A boat takes the penalty by delivering a written notice to the race office that identifies the race number and when and where the incident occurred. The penalty shall be a 20% Scoring Penalty, calculated as stated in rule 44.3(c) if taken before the protest time limit expires. Otherwise a 30% Scoring Penalty shall apply, calculated as stated in rule 44.3(c). However, rules 44.1(a) and (b) apply, and the penalty shall not be taken after a protest hearing involving the incident has begun.

## 13. TIME LIMITS

- 13.1. The race shall end at 2400 hours CDT, Saturday 13 May 2017, or when the last yacht finishes, whichever is earlier.
- 13.2. Yachts which have not finished at the expiration of the time limit will be scored Did Not Finish without a hearing. This changes rules 35, A4 and A5.

## 14. PROTESTS

- 14.1. Protest forms are found in Addendum C to these Sailing Instructions. Protests and requests for redress or reopening shall be delivered to the HYC Office within the appropriate time limit.
- 14.2. Competitors intending to file a protest must notify the race committee (by VHF or 832.428.0785) at the first reasonable opportunity.
- 14.3. For each class, the protest deadline is 10:00 a.m. Sunday May 14.
  - 14.3.1. Should a competitor be unable to reach the HYC office before the protest deadline expires, a photograph of the front and back of the signed protest form will be accepted by the protest committee via e-mail ([jjgrills@gmail.com](mailto:jjgrills@gmail.com)). This email must be time-stamped before the time limit expires. If it is time stamped after the time limit has expired the protest will be found invalid. The signed original of the protest form must be turned in to the protest committee before any hearing can take place.
- 14.4. All notices will be posted on the HYC Official Notice board in the breezeway next to the HYC offices.
- 14.5. Notices will be posted no later than 30 minutes after the deadline to inform competitors of hearings in which they are parties or named as witnesses.
- 14.6. Hearings will be held in the protest room and time as posted by the protest committee.
- 14.7. Notices of protests by the race committee or protest committee will be posted to inform boats under rule 61.1(b).
- 14.8. Appendix T will apply.
  - 14.8.1. Appendix T1.b is modified to read: "A Post-Race Penalty is a 20% Scoring Penalty calculated as stated in rule 44.3(c) if taken before the protest time limit expires. Otherwise, a Post-Race Penalty is a 30% Scoring Penalty calculated as stated in rule 44.3(c). However, rule 44.1(a) applies."

**15. SCORING**

15.1. The Low-Point Scoring system, Appendix A, shall apply.

**16. SAFETY REGULATIONS**

16.1. Prior to the first warning signal, each yacht shall check-in with the Race Committee. The procedure shall be to sail within line of sight of the Race Committee, hail on channel 68 and repeat your sail number, yacht name, and the number of crew on board.

16.1.1. Skippers are encouraged to e-mail or text the team roster to the race committee in advance.

16.2. Any yacht that starts, and then retires or withdraws before finishing the race shall notify the Race Committee on VHF channel 68, cell phone (832.428.0785) or if that is not possible the Houston Yacht Club office (phone number 281.471.1255). Please do this; failure to comply may result in disqualification from the event and/or rejection of entry in future events hosted by the Houston Yacht Club.

**17. RADIO COMMUNICATIONS**

17.1. The official communications channel is VHF channel 68.

17.2. The Race Committee will also be available by telephone at 832.428.0785.

17.3. While offshore, all yachts are encouraged to monitor channel 16 and to communicate potential hazards to other racers.

17.4. All yachts should also monitor VHF Channel 13 when in the vicinity of the Houston Ship Channel for commercial traffic concerns.

**18. PRIZES**

18.1. The Carroll Blanchard perpetual trophy will be awarded to the boat finishing first in the Spinnaker Class.

18.2. Trophies will be awarded based on final registration volumes.

18.3. Registrations received after the trophy order has been placed shall be awarded IOU's in place of the actual trophy.

18.4. The race committee shall deliver owed trophies at a mutually agreeable time and place at a later date.

18.5. Prizes will be awarded Sunday May 14 at 1:00 p.m. in the HYC main bar.

**19. DISCLAIMER OF LIABILITY**

19.1. Competitors participate in the regatta entirely at their own risk. See rule 4, Decision to Race. The organizing authority will not accept any liability for material damage or personal injury or death sustained in conjunction with or prior to, during, or after the regatta.

**20. INSURANCE**

20.1. Each participating boat shall be insured with valid third-party liability insurance with a minimum cover of \$300,000 per incident or the equivalent.

**21. USE OF ENGINES**

21.1. Use of engines is prohibited except as permitted in section 20.

21.2. Engines may be used to charge batteries

21.3. Engines may be used in an emergency situation. After the emergency is resolved, competitors are to return to the closest point possible at which the engine was engaged and continue the race.

**22. PROHIBITED EQUIPMENT**

22.1. Use of a self-steering system is prohibited.

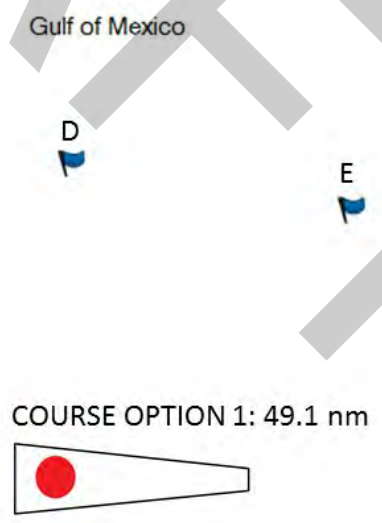
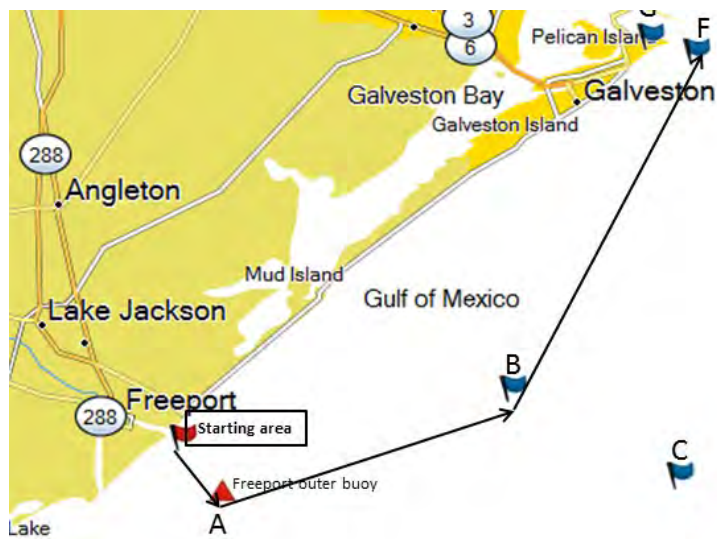
**23. HANDICAPS**

23.1. All yachts must be handicapped by PHRF Galveston Bay for 2017 or GBCA Cruising Class Handicap.

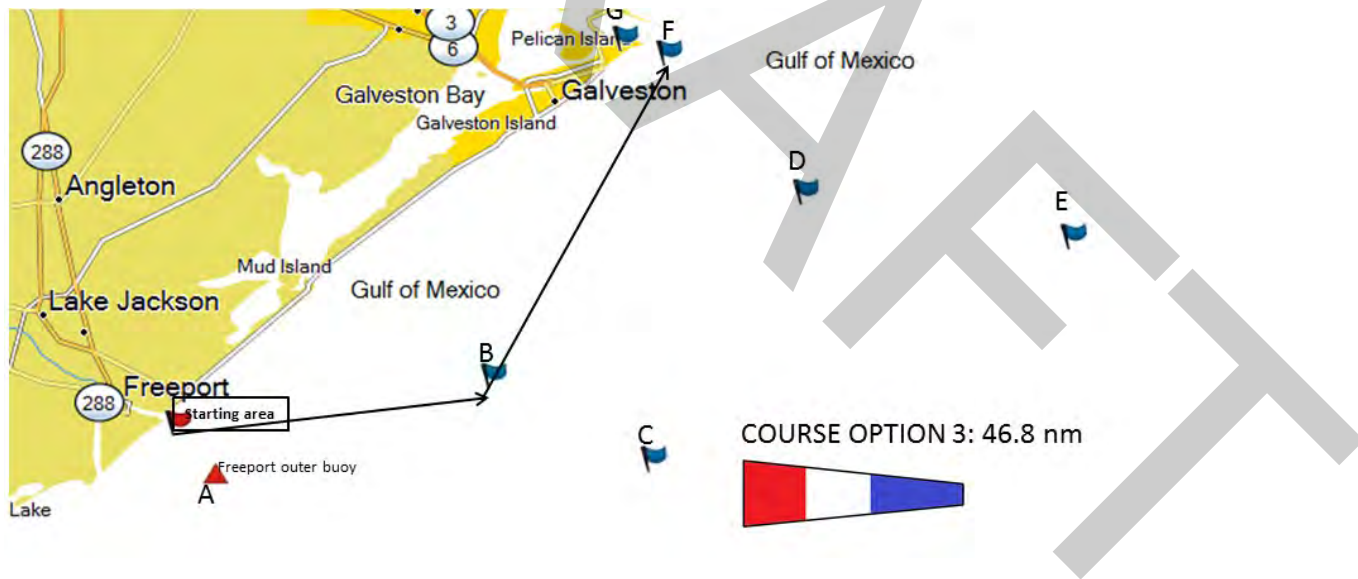
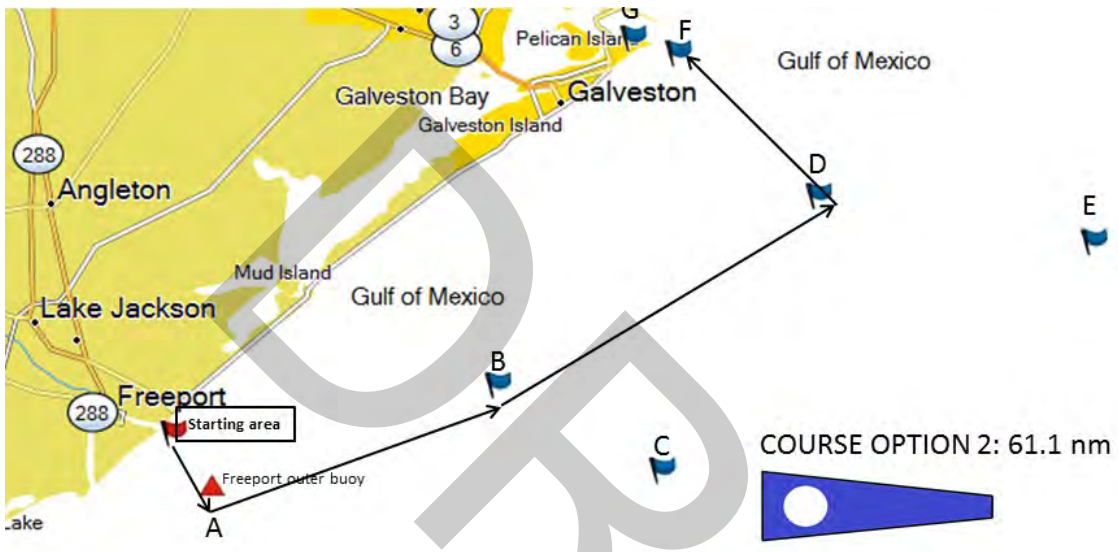
**MARK B: TABS BUOY B**



**COURSE OPTION ILLUSTRATIONS**









**THIS SIDE FOR PROTEST COMMITTEE USE**

Number .....

Fill in and tick as appropriate

Heard together with numbers .....

Withdrawal requested  Signature ..... Withdrawal permitted

Class ..... Fleet ..... Race .....

Protest, or request for redress or reopening, received within time limit  Time limit extended

Protestor, or party requesting redress or reopening, represented by .....

Other party, or boat being considered for redress, represented by .....

Names of witnesses .....

Interpreters .....

**Remarks**

Conflict of interest declared  Objections: Yes  No  .....

Written protest or request identifies incident  .....

'Protest' hailed at first reasonable opportunity  .....

No hail needed; protestee informed at first reasonable opportunity  .....

Red flag conspicuously displayed at first reasonable opportunity  .....

Protest or request valid; hearing will continue  Protest or request invalid; hearing is closed

**FACTS FOUND** .....

.....  
.....  
.....  
.....  
.....  
.....  
.....  
.....  
.....  
.....

Diagram of boat ..... is endorsed by committee  Committee's diagram is attached

**CONCLUSIONS AND RULES THAT APPLY** .....

.....  
.....

**DECISION**

Protest: dismissed  Boat(s) ..... is (are) disqualified from race(s) .....  
penalized as follows  : .....

Redress: not given  given as follows  : .....

Request to reopen a hearing: denied  granted

Protest committee chairman and other members .....

.....

Chairman's signature .....

Date and time .....