

## **HYC Mid-Winter Regatta February 24-25, 2018**

**Organizing Authority: The Houston Yacht Club, Shoreacres, Texas**

### **SAILING INSTRUCTIONS**

#### **1. RULES**

- 1.1 The regatta will be governed by the rules as defined in *The Racing Rules of Sailing*, Class Guidelines and the Galveston Bay PHRF Guidelines.

#### **2. NOTICES TO COMPETITORS**

- 2.1 Notices to Competitors will be posted on the official Race Information Notice board located in the breezeway adjacent to the offices of The Houston Yacht Club.

#### **3. CHANGES TO SAILING INSTRUCTIONS**

- 3.1 Any change to these Sailing Instructions will be posted before 0800 on the day it will take effect, except that any change to the schedule of races will be posted by 2000 on the day before it will take effect.

#### **4. SIGNALS MADE ASHORE**

- 4.1 Signals made ashore shall be displayed from the signal staff on the lawn of The Houston Yacht Club.
- 4.2 When flag AP is displayed ashore, "1 minute" is replaced with "not less than 60 minutes" in the race signal AP.
- 4.3 Signal flags may be flown either alone or over one or more numeral pennants. Individual lines will be designated by following pennants:
- 4.3.1 When flag AP over "1" pennant is displayed, the signal applies to the Windward/Leeward Line .
  - 4.3.2 When flag AP over "2" pennant is displayed, the signal applies to the Pursuit Line.
  - 4.3.3 When flag AP over "3" pennant is displayed, the signal applies to the Dinghy Line.
  - 4.3.3 If no Numeral Pennant is displayed, the signal pertains to all lines. This changes RRS Race Signals.

#### **5. SCHEDULE OF RACES**

- 5.1 Races will be sailed according to the schedule in the Notice of Race. All times are GPS times.

#### **6. CLASS FLAGS**

- |                |                      |
|----------------|----------------------|
| 6.1 Ensign     | Ensign Class Flag    |
| Lightning      | Lightning Class Flag |
| J/22 Flag      | Yellow               |
| J/105          | Blue                 |
| Optimist Green | Green                |

|              |        |
|--------------|--------|
| Optimist RWB | Red    |
| Laser        | Maroon |

**7. RACING AREA**

- 7.1 All classes will sail around drop or fixed marks in the area bounded by Morgan’s Point on the north, the Bayport Channel on the south, the Houston Ship Channel on the east and the La Porte/Shoreacres shore line on the west.
- 7.2 Boats shall not enter any Ship Channel. Ship Channels are designated as obstructions.

**8. CHECK IN**

- 8.1 Prior to the warning for the first race of each day, each boat shall check-in with, and be recognized by, the Race Committee (R/C) Signal Boat displaying the code Flag "L," by passing close astern, on starboard tack and hailing her sail number. Boats failing to check in properly may not be scored.
- 8.2 Pursuit Course racers must additionally hail their PHRF rating and spinnaker or non-spinnaker class to complete their entry.

**9. THE COURSES**

9.1 The Windward/Leeward Line

- 9.1.1 Attachment C shows the courses and the order in which the marks are rounded.
- 9.1.2 No later than the warning signal, the Race Committee Signal boat will display a numeral pennant indicating the number of legs to be sailed. All marks shall be rounded leaving the mark to port.

9.2 The Pursuit Line

- 9.2.1 Attachment B shows the courses and the order in which the marks are rounded.
- 9.2.2 No later than the warning signal, the Race Committee Signal Boat will display a numeral pennant indicating the course to be sailed (See Attachment B).

9.3 The Dinghy Line

The course will be either: L2 as shown in *The Racing Rules of Sailing*, Appendix S or a triangular mid-leg start/finish. If there is no gate, the downwind rounding will be the starting line pin.

**10. MARKS**

10.1 The Windward/Leeward Line

- 10.1.1 The weather mark will be a yellow tetrahedron.
- 10.1.2 New marks as provided in instruction 13 will be orange tetrahedrons.
- 10.1.3 For the first leg of all courses and the last leg of a leeward finish, the leeward mark is not considered a mark of the course.
- 10.1.4 For the last leg of a windward finish, the windward mark is not considered a mark of the course.

10.2 The Pursuit Line

- 10.2.1 The Pursuit Line mark layout is shown in Attachment A.

- Mark #1, is the “The Judges Stand” located approximately: **29° 37.367’N, 94° 59.726’W**
- Mark #2, is the “High Range” located at approximately: **29° 37.790’N, 94° 58.214’W**
- Mark #3, a large YELLOW tetrahedron located approximately: **29° 39.833’N, 94° 58.919’W**
- Mark #4, a large YELLOW tetrahedron located at approximately: **29° 38.839’N, 95° 00.114’W**

### 10.3 The Dinghy Line

10.3.1 All marks will be YELLOW balls.

10.3.2 The starting line pin is a floating mark.

## 11. **THE START**

### 11.1 The Windward/Leeward Line and Dinghy Line

11.1.1 Races will be started by using RRS 26.

11.1.2 The starting line will be between a staff displaying an orange flag from the signal boat on the starboard end and a mark or floating shape at the port end.

### 11.2 The Pursuit Line

11.2.1 The **Pursuit Line** will be between a staff displaying an orange flag on a race committee vessel and the course side of the starting mark.

11.2.2 The **Pursuit Line start** is staggered, based on the boat PHRF handicap. The Warning/Preparatory signal, as well as the starting times for all competitors will be provided at the competitor’s briefing. The Warning/Prep Signal is anticipated to be on the hour or on even 10 min increments. (EG 1100, 1110, 1120, 1130 ....). Warning/Prep Signals for the First Race each day is anticipated to be at 1100. Warning/Prep Signal time after Postponement or for additional races will be announced on **VHF Channel 72**.

11.2.3 The Warning/Preparatory signal is the display of the orange line flag.

11.3 Any boat whose preparatory signal has not been made shall keep clear of the starting area and of any boat whose preparatory signal has been made.

11.4 A boat shall start no later than 10 minutes after her assigned starting time.

11.5 The Race Committee may elect to trail a line (not to exceed 30') attached to a floating object, behind the Race Committee boat or elect to attach a buoy to the boat's anchor marking the anchor and the anchor rode (of up to approximately 50'). The floating object and its line shall be considered part of the Race Committee boat and hitting the floating object or running over the line shall be treated as hitting the Race Committee boat.

## 12. **RECALLS**

12.1 Recalls will be signaled in accordance with Rule 29.

12.2 As a courtesy, the Race Committee will attempt to hail boats "On Course Side" (OCS) as soon as possible after the start. The Race Committee may use VHF radios or loud hailer.

12.3 The failure of electronic equipment, failure to hear a hail, order of hail, or delay in hailing will not be grounds for redress. This modifies RRS 62.1(a).

12.4 Code flag X will be displayed for a short period for the Pursuit Line. This changes RRS 29 and Appendix A.

12.5 Pursuit start times are GPS time, which governs. All boats will be responsible for determining their exact start time, and no start times will be announced or signaled from the Race Committee boat. The Race Committee will monitor start times of each boat. OCS boats have the option of returning to the start line and restarting, or shall take the penalty as shown in the table below. The penalty will be assessed at scoring. This changes RRS 29.1 and Appendix A.

|                    |                       |
|--------------------|-----------------------|
| 0 to 10 sec early  | penalty of 30 seconds |
| 10 to 30 sec early | penalty of 1 minute   |
| 30 to 1 min early  | penalty of 3 minutes  |
| 1 min to 2 min     | penalty of 10 minutes |
| More than 2 min    | disqualified          |

**13. CHANGE OF THE POSITION OF THE NEXT MARK**

**13.1 The Windward/Leeward Line and Dinghy Line**

13.1.1 The race committee boat may relocate the windward mark to square the course. No change will be signaled. This changes Rule 33.

**13.2 The Windward/Leeward Line**

To change the next leg of the course, the race committee will lay a new mark (described in Section 10.1 and remove the original mark as soon as practicable.

**14. SHORTENED COURSE**

**14.1 The Windward/Leeward Line and Dinghy Line**

14.1.1 Shortening the race will be at the leeward mark, with a finish downwind in the direction from the windward mark with the Race Committee Signal Boat to port. The Signal Boat will be in the original starting position and will not relocate to the opposite side of the mark.

**14.2 The Pursuit Line**

14.2.1 Any shortening of the race will be signaled (flag S displayed with 2 sounds) at one of the marks described in Section 10.2 of these Sailing Instructions.

**15. THE FINISH**

**15.1 The Windward/Leeward and Dinghy Lines**

15.1.1 The Finish Line will be between a staff displaying an orange flag on the Race boat on the port end and a mark or floating shape on the starboard end.

**15.2 The Pursuit Line**

15.2.1 The Finish Line will be between a staff displaying an orange flag on a race committee vessel and the course side of the finish mark. The Race Committee will record the order of finish.

**16. TIME LIMITS**

16.1 Unless posted on the HYC Race Information Board, the Windward/Leeward Line time limit is **120 minutes** and the Pursuit Line time limit is **210 minutes**.

16.2 Boats failing to finish within 30 minutes (the finishing window) after the first boat in its class sails the course and finishes will be scored Time Limit Expired (TLE). The points awarded for boats scored TLE will be the whole number (rounding 0.5 upward) equal to the number of boats starting the race minus 50% of the number of boats scored TLE. This changes RRS 35, A4, A5 and A11.

## **17. PENALTIES**

- 17.1 The first two sentences of rule 44.1 are changed to: "A boat may take a One-Turn Penalty when she may have broken a rule of Part 2 or rule 31 while racing. However, when she may have broken a rule of Part 2 while in the zone around a mark other than a starting mark, her penalty shall be a Two-Turns Penalty."

## **18. PROTESTS AND REQUESTS FOR REDRESS**

- 18.1. The protest and redress procedures for this regatta will comply with sections T2, T3, and T4 of RRS Appendix T, a US Sailing prescription. This provides for arbitration in advance of a hearing.
- 18.2. Intent to protest shall be signaled in accordance with RRS. The protesting boat shall also notify the Race Committee at the first reasonable opportunity and be acknowledged before leaving the finish area.
- 18.3. Protests shall be written on forms available at the office of the Houston Yacht Club and delivered there within sixty (60) minutes following the arrival in the harbor of the Race Committee boat for the racing line involved. This time will be posted on the official notice board.
- 18.4. The times and locations of the protest hearings, along with the names of the boats involved will be posted on the Race Notice Board at the entrance to the breezeway at the front of the Houston Yacht Club.
- 18.5. For the purpose of meeting obligations under US Sailing prescriptions concerning redress, notification of a redress hearing shall be by posting on the official notice board for thirty minutes. The requirement for written requests for attendance of the hearing will be satisfied by a signup sheet at the official protest table. No more than one person per boat may attend. No request for reopening a hearing will be accepted after 6 p.m. Saturday, February 24, 2018 or 3 p.m. Sunday, February 25, 2018.

## **19. SCORING**

- 19.1 The Low-Point Scoring system of Appendix A shall apply.
- 19.2 One race shall be completed to constitute an event.
- 19.3 No scores will be excluded. This changes Rule A2.

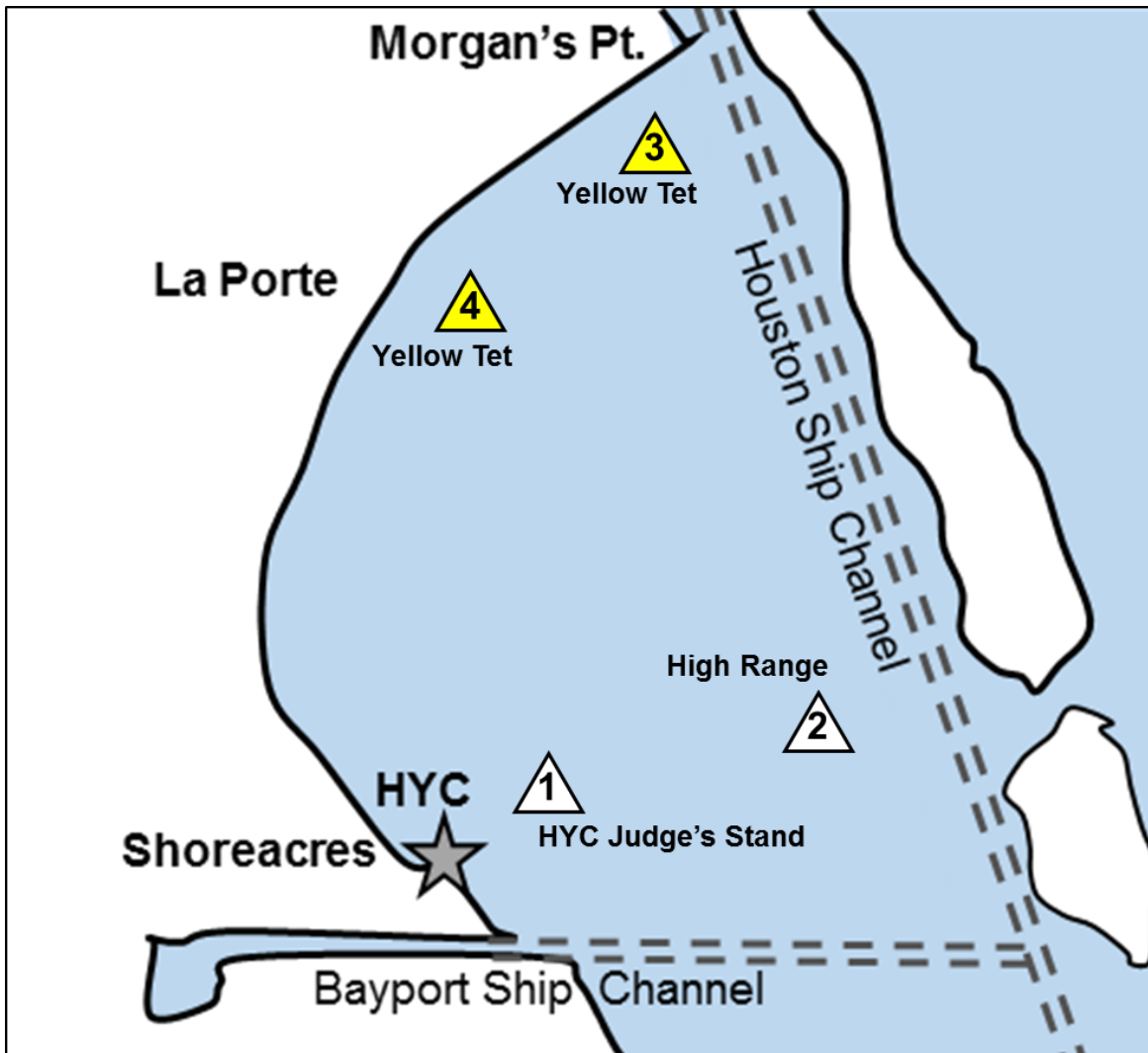
## **20. SAFETY**

- 20.1 Any boat that has checked in, and then withdraws before finishing the race, shall notify the Race Committee on the water, or, if that is not possible, The Houston Yacht Club office by telephone: **281-471-1255**, or **VHF Channel 68 (if Windward Leeward Line)**, or **VHF Channel 70 (if Dinghy Line)**, or **VHF Channel 72 (if Pursuit Line)**. Failure to comply with this requirement may result in disqualification from the event.
- 20.2 Boats shall not discharge trash into the water. The penalty for violating RRS 55 will be a 20% Scoring Penalty.
- 20.3 **DISCLAIMER OF LIABILITY:** Competitors participating in the regatta entirely at their own risk. See RRS 4, Decision to Race. The Organizing Authority will not accept liability for material damage, personal injury or death sustained in connection with or prior to or after the regatta.

## **21. RADIO COMMUNICATIONS**

- 21.1 A yacht shall neither make radio transmissions while racing, nor receive special radio communications not available to all yachts. This does not apply to situations that threaten safety of life and/or property.
- 21.2 The Race Committee will attempt to monitor **VHF Channel 68 for the Windward/Leeward Line, VHF Channel 70 for the Dinghy Line, and VHF Channel 72 for Pursuit line;** and Pursuit Line; and may use VHF radio to hail premature starters and the abandonment of races.

ATTACHMENT A  
PURSUIT COURSE MARK LAYOUT



## ATTACHMENT B

### PURSUIT LINE COURSES

#### Course #1

Mark 1 to Mark 4 Leave on Port  
Mark 4 to Mark 1 Leave on Port  
Mark 1 to Mark 2 Leave on Port  
Mark 2 to Mark 1 Leave on Starboard  
Mark 1 to Mark 4 Leave on Port  
Mark 4 to Mark 1 to finish for a total of 8.8 miles

#### Course #2

Mark 1 to Mark 2 Leave on Port  
Mark 2 to Mark 1 Leave on Starboard  
Mark 1 to Mark 4 Leave on Starboard  
Mark 4 to Mark 3 Leave on Port  
Mark 3 to Mark 4 Leave on Port  
Mark 4 to Mark 1 to finish for a total of 8.6 miles

#### Course #3

Mark 1 to Mark 2 Leave on Port  
Mark 2 to Mark 3 Leave on Port  
Mark 3 to Mark 1 Leave on Starboard  
Mark 1 to Mark 4 Leave on Port  
Mark 4 to Mark 1 Leave on Port  
Mark 1 to Mark 2 Leave on Port  
Mark 2 to Mark 1 to finish for a total of 11.8 miles

#### Course #4

Mark 1 to Mark 2 Leave on Port  
Mark 2 to Mark 3 Leave on Port  
Mark 3 to Mark 2 Leave on Port  
Mark 2 to Mark 3 Leave on Port  
Mark 3 to Mark 4 Leave on Port  
Mark 4 to Mark 1 Leave on Port  
Mark 1 to Mark 4 Leave on Port  
Mark 4 to Mark 1 to finish for a total of 13.6 miles

#### Course #5

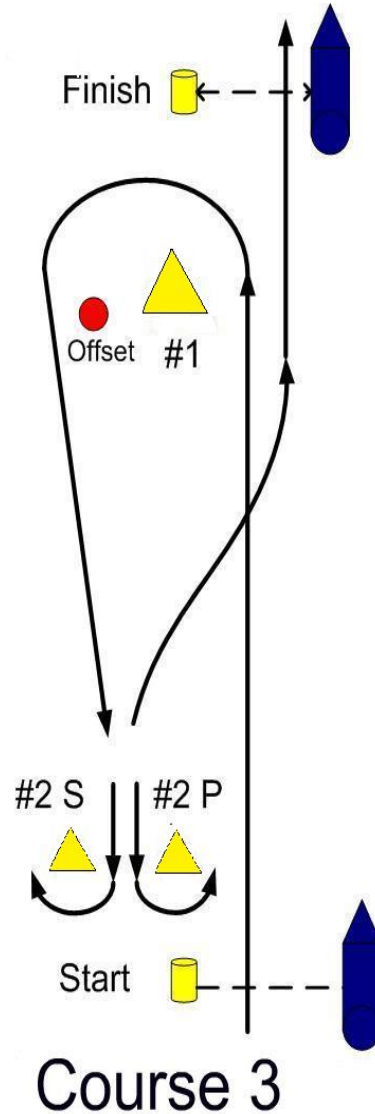
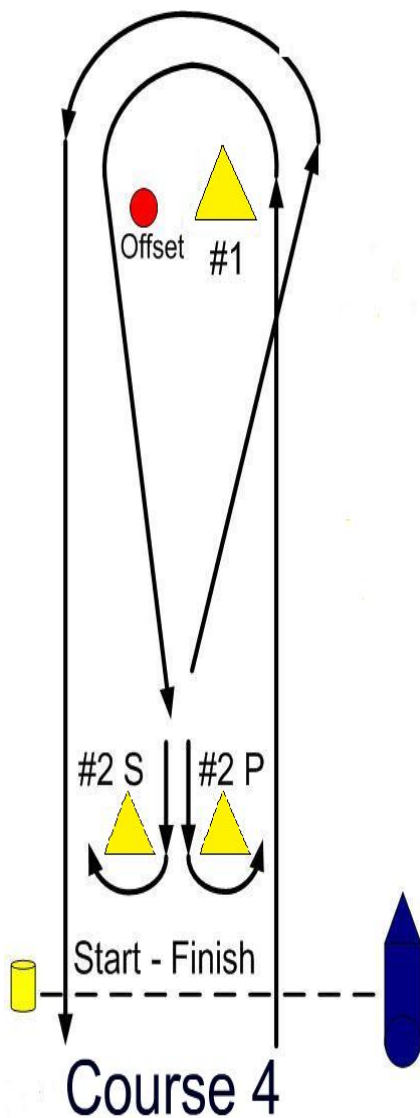
Mark 1 to Mark 2 Leave on Port  
Mark 2 to Mark 3 Leave on Port  
Mark 3 to Mark 4 Leave on Port  
Mark 4 to Mark 1 to finish for a total of 6.4 miles

#### Course #6

Mark 1 to Mark 3 Leave on Port  
Mark 3 to Mark 4 Leave on Port  
Mark 4 to Mark 2 Leave on Port  
Mark 2 to Mark 3 Leave on Port  
Mark 3 to Mark 1 to finish for a total of 10.5 miles



## ATTACHMENT C COURSE DIAGRAMS



**Course 4 (illustrated above)**  
**Four (4) Legs - Leeward Finish**  
**Course 6**  
**Six (6) Legs - Leeward Finish**  
**Course 8**  
**Eight (8) Legs - Leeward Finish**

**Course 3 (illustrated above)**  
**Three (3) Legs - Windward Finish**  
**Course 5**  
**Five (5) Legs - Windward Finish**  
**Course 7**  
**Seven (7) Legs - Windward Finish**