

Leukemia Cup - June 22-24, 2018

Sailing Instructions

Venue "W" - W/L North Course

Venue "V" - W/L South Course

1. RULES

- 1.1. All racing will be governed by the *rules* as defined in the current Racing Rules of Sailing 2017-2020 (RRS).
- 1.2. Rules regarding Handicaps, Certificates, Rating Authorities, and Class Rules will be as stated in the NOR.
- 1.3. Competitors encountering non-racing craft shall conform to the Inland Rules of the Road. No racing vessel has rights of way over a large commercial/naval deep draft ships.
- 1.4. The Houston Ship Channel and the Bayport ship channel are designated as obstructions.
- 1.5. Any racing boat that receives 5 horns may be disqualified and scored DNE .
- 1.6. ***Rule 41, 60.2, 63.1 and A5 are modified to add that the Race Committee (RC) may initiate a hearing against a boat infringing this instruction 1.3,1.4,1.5.***
- 1.7. US SAILING Prescriptions to RRS 63.2 and 63.4 will not apply.
- 1.8. Houston Yacht Club is the Organizing Authority.

2. NOTICE TO COMPETITORS

- 2.1. A competitor briefing for all Venues will be held at 1900 on Friday, June 23 in the HYC Ballroom.
- 2.2. Notices to competitors will be posted on the official notice board located in the breezeway of the HYC Clubhouse.
- 2.3. Protest Hearing Notice Board will be posted on the official notice board located in the breezeway of the HYC Clubhouse.

3. CHANGES TO THE SAILING INSTRUCTIONS

- 3.1. Any changes to these sailing instructions will be posted on the official regatta notice board not later than 0900 each day, except that any change to the schedule of races will be posted by 2000 on the day before it will take effect. At the same time Code Flag L accompanied by a sound signal will announce that an amendment to the sailing instructions is available.

4. SIGNALS MADE ASHORE

- 4.1. Signals made ashore will be displayed from the HYC flagpole
- 4.2. When flag AP is displayed ashore, '1 minute' is replaced with 'not less than 60 minutes.
- 4.3. When flag AP over "W" flag is displayed ashore, the signal applies only to Venue "W".
- 4.4. When flag AP over "V" flag is displayed ashore, the signal applies only to Venue "V".

5. SIGNALS MADE AFLOAT/VENUE COMMUNICATION

- 5.1. When a visual signal is displayed over a class flag, the signal applies only to that class. In the absence of any class flags, the signal applies to all classes. (See RRS Race Signals)
- 5.2. In accordance with RRS 90.2 (c), oral changes to the Sailing Instructions may be made on the water. A change is in effect when the RC signal boat displays code flag L over W or V corresponding to the applicable course with one sound signal. This means "come within hail" of the RC Signal Boat to receive oral changes to the Sailing Instructions. The Race Committee may give oral changes to the Sailing Instructions to each boat by VHF or loud hailer and require acknowledgement.
- 5.3. Official communications for the **Venue "W" - W/L North Course** will be made on **VHF 68**.
- 5.4. Official communications for the **Venue "V" - W/L South Course** will be made on **VHF 69**.

6. CLASSES, CLASS FLAGS AND STARTING ORDER

6.1. Class Flags

"W" North Course	J/22	J/22 Class Flag
	Lightning	Lightning Class Flag
	EVO	Maroon Flag
	Ensign	Ensign Class Flag

"V" South Course	J/105	Grey Flag
	Pulse 600	Yellow Flag

- 6.2. Boats not involved in a starting sequence shall keep clear of the starting area and those boats preparing to start. See RRS 24.1
- 6.3. There will be a minimum of 1 minute between the start signal for a class and the warning signal for the next class.
- 6.4. Race Committee may combine class starts or alter the sequences of starts. If this is done, it will be communicated via the appropriate radio channel prior to the start of the sequence.

7. SCHEDULE OF RACES:

- 7.1. **Friday, June 23:** 1900 Competitors Brief; Reception to follow.
- 7.2. **Saturday, June 24:** 1100 First Warning. Three to four races are planned;
- 7.3. **Sunday, June 25:** 1100 First Warning, Two to three races are planned; Awards following at approx. 1630 in HYC Clubhouse Ballroom.
- 7.4. The Race Committee reserves the right to have more or fewer races each day due to weather or to accomplish event schedules.
- 7.5. On Sunday, no warning signal will be made after 1500.
- 7.6. Individual classes may be informed that their racing is complete for the day by verbal hailing from the finish boat.

8. RACING AREA

- 8.1. The approximate center of the "W" North Course will be in Galveston Bay east of the HYC Harbor entrance, north of the Bayport channel at coordinates of N29° 38.4', W94° 59.3'
- 8.2. The approximate center of the "V" South Course will be in Galveston Bay south of the Bayport channel at coordinates of N29° 34.7', W94° 57.5'

9.0 CHECK IN

- 9.1. Prior to the warning for the first race each day, each boat shall check-in with, and be recognized by, the Race Committee (R/C) Signal Boat displaying the Code Flag "L," by passing close astern, on starboard tack and hailing her sail number. When a boat has been recognized, the R/C will hail the boats sail number. Boats failing to check-in properly will be scored DNC without a hearing. This Amends RRS 90.3 (a), RRS A4.1 and A5.

CHECK-IN VIA RADIO NOT ALLOWED.

10. THE COURSE

- 10.1. The course will be selected from the attached Course Description. This illustration shows the courses, the order in which the marks are to be rounded and passed and the side on which each mark is to be left. No later than the warning signal, the race committee signal boat will

display a numerical pennant indicating the course to be sailed. **NOTE:** Classes on the same venue *may* have different number course.

- 10.2. In the event the leeward mark is replaced by a leeward gate, boats shall pass thru the two gate marks from the direction of the previous mark before proceeding on to the next leg of the course.

11 MARKS

- 11.1. **Windward Leeward Course Lines** marks will be as follows:

Mark 1 and 2 will be YELLOW TETRAHEDRONS,
New marks 1 and 2, as prescribed in SI 14, will be ORANGE TETRAHEDRONS,
Mark S (Starting line) will be an ORANGE Ball
Mark F (Finishing line) will be an ORANGE Ball

- 11.2. For the first leg of all courses and the last leg of a leeward finish, the leeward mark or gate is not considered a mark of the course.
11.3. For the last leg of a windward finish, the windward marks are not considered a mark of the course

12. THE START

- 12.1. The starting line will be between a staff with an orange flag displayed on the R/C and the course side of Mark "S".
12.2. A boat starting later than 4 minutes after her starting signal will be scored Did Not Start without a hearing. This changes RRS A4 and A5.
12.3. If there is a significant wind shift during the start sequence, a *new* windward mark may be set for classes NOT YET STARTED. This change will be signaled by displaying Flag C over each of the affected classes' class flags during their start sequence. The new Windward Mark will be as described in SI 11.1. When, in subsequent changes of course, a new mark is replaced, it will be replaced with an original mark.

13. RECALLS

- 13.1. As a courtesy, the Race Committee will attempt to hail boats "On Course Side" (OCS) as soon as possible after the start. Boats will be hailed as such on VHF radio channel 68.
13.2. Failure of electronic equipment, failure to hear a hail, order of hail, or delay in hailing will not be grounds for redress. This modifies RRS 62.1 (a).

14. CHANGE OF NEXT LEG OF THE COURSE

- 14.1 To change the next leg of the course, the Race Committee will lay a *new* mark (or move the finishing line) and remove the original mark as soon as practicable. When in a subsequent change a new mark is replaced, it will replace by an original mark.

15. THE FINISH

- 15.1. The finish line will be between a staff displaying an orange flag on R/C vessel and the course side of a nearby mark located as described in the course chart.
15.2. If the finish Mark "F" is missing, finishers should pass close (within 5 boat lengths) by the finish boat, leaving it to starboard.

16. PENALTIES

The first two sentences of rule 44.1 are changed to: 'A boat may take a One-Turn Penalty when she may have broken a rule of Part 2 or rule 31 while racing. However, when she may have broken a rule of Part 2 while in the zone around a mark other than a starting mark, her penalty shall be a Two-Turns Penalty.

17. TIME LIMITS

- 17.1. If no boat in a class passes the first mark within 40 minutes, the race will be abandoned.
- 17.2. The time limit for the first boat to finish in each class is 90 minutes.
- 17.3. Boats failing to finish within 20 minutes after the first boat in her class sails the course and finishes, will be scored DNF. This changes RRS 35, A4 and A5.
- 17.4. On Sunday, no race will be started after 1500.

18. PROTESTS

- 18.1. A boat intending to protest about an incident that occurs in the racing area shall comply with the RRS and shall also notify the race committee finish boat of her intention, including the sail number of the boat(s) being protested. This shall be done after finishing or retiring. This changes RRS 61.1(a).
- 18.2. Protests shall be in writing. Forms are available at the HYC Front Desk, and must be delivered to the HYC Office within 1 hour after the race committee boat enters the HYC Harbor.
- 18.3. HYC Harbor Entering times and protest time limit for each venue will be posted on the Official Regatta Notice Board and on the Protest Hearing Notice Board.
- 18.4. A list of boats involved in protests, hearing times, and disposition will be posted on the Protest Hearing Notice Board.
- 18.5. On Sunday June 26, a request for redress based on an incident in the racing area shall be delivered within the protest time limit or, if based on a protest committee decision, shall be delivered no later than 30 minutes after the decision was posted. This changes rule 62.2.

19. HAULOUT RESTRICTIONS

- 19.1. Boat not racing shall not be hauled out during the regatta except with and according to the terms of prior written permission of the Race Committee.

20. SCORING AND AWARDS

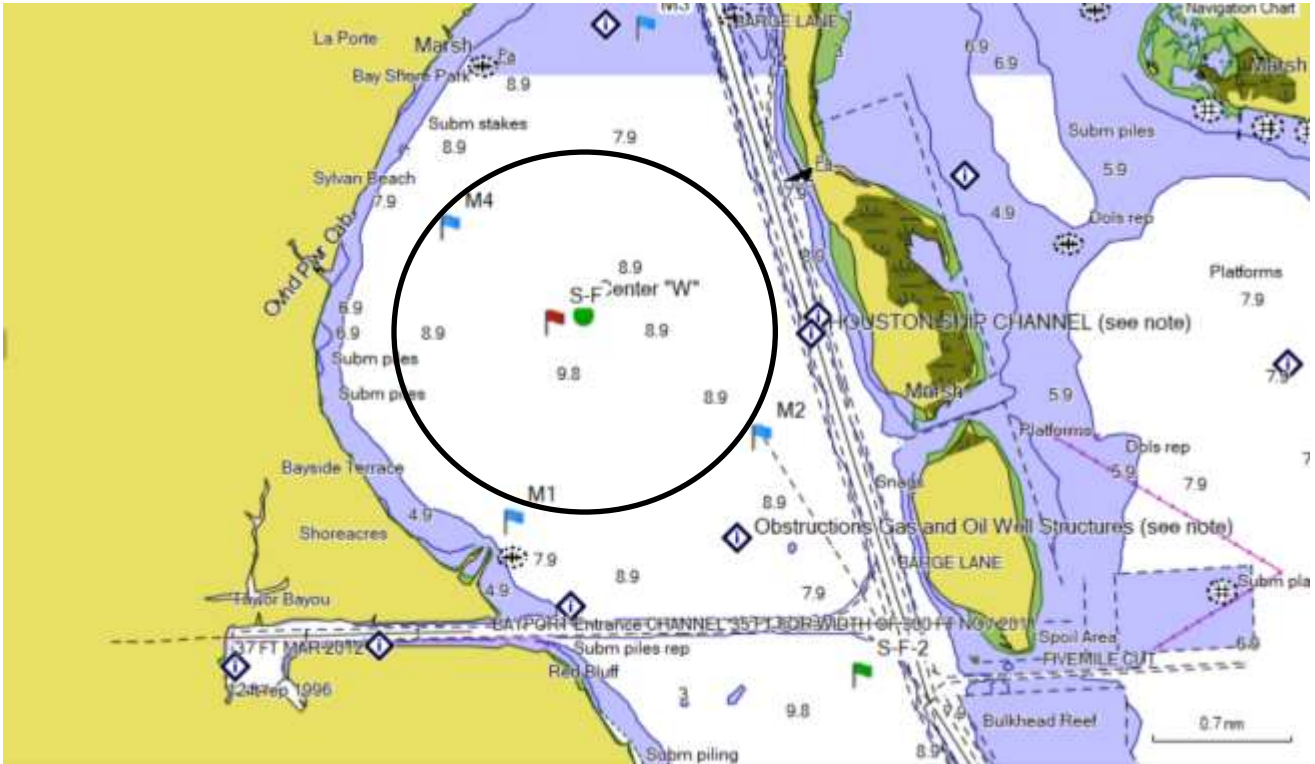
- 20.1. Scoring Results are located online and on the official notice board.
- 20.2. All awards will be awarded as soon as possible after the conclusion of racing on Sunday.

21 SAFETY

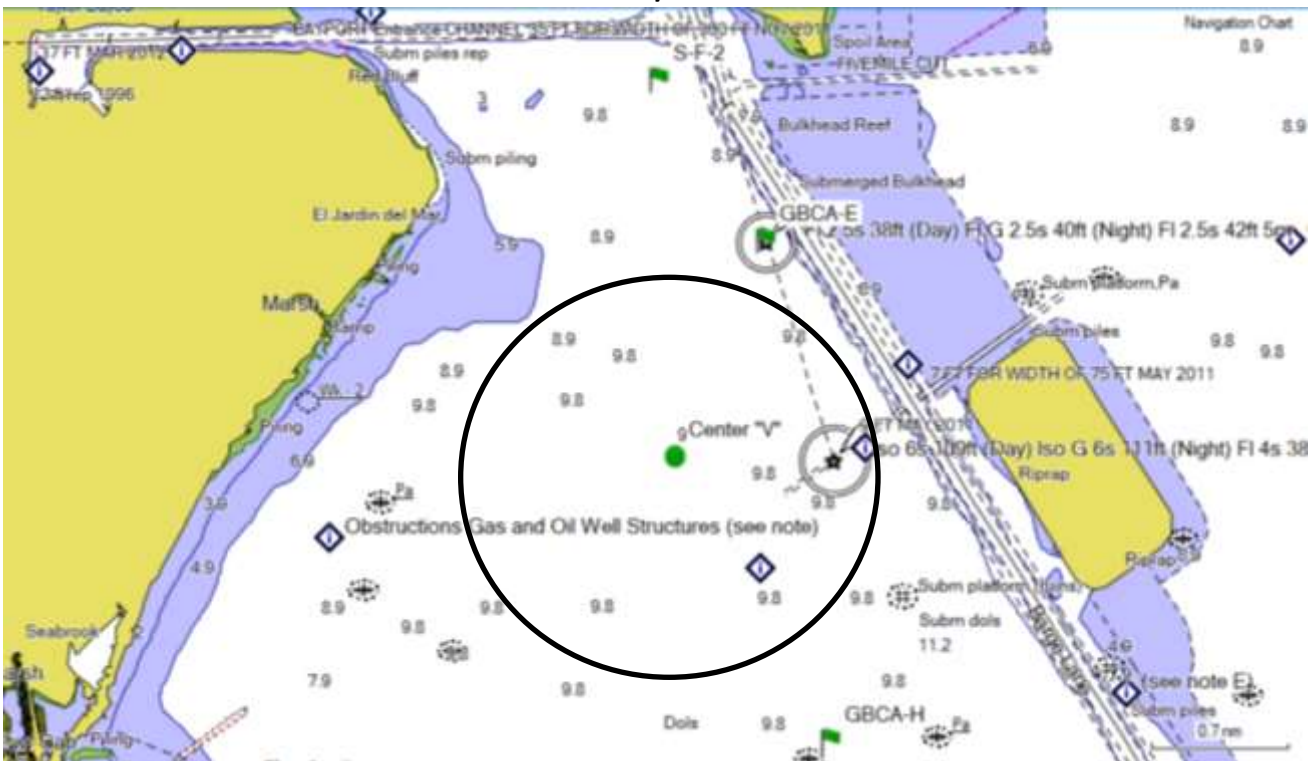
- 21.1. Any boat that has checked in, and then withdraws before finishing the race, shall notify the Race Committee on the water, or, if that is not possible, the Houston Yacht Club office by telephone: 281-471-1255, or VHF Channel 68. Failure to comply with this requirement may result in disqualification from the event.
- 21.2. Boats shall not discharge trash into the water. The penalty for violating RRS 55 will be a 20% Scoring Penalty.
- 21.3. **DISCLAIMER OF LIABILITY:** Competitors participating in the regatta entirely at their own risk. See RRS 4, Decision to Race. The Organizing Authority will not accept liability for material damage, personal injury or death sustained in connection with or prior to or after the regatta.

Racing Areas

Venue "W" - W/L North Course



Venue "V" - W/L South Course



Course Chart

Course	Marks	Course	Marks
2	S, 1, 2, 1, Finish	1	S, 1, 2, Finish
4	S, 1, 2, 1, 2, 1, Finish	3	S, 1, 2, 1, 2, Finish

Reference Sailing Instruction 10.3 (Gates) for course variables.

